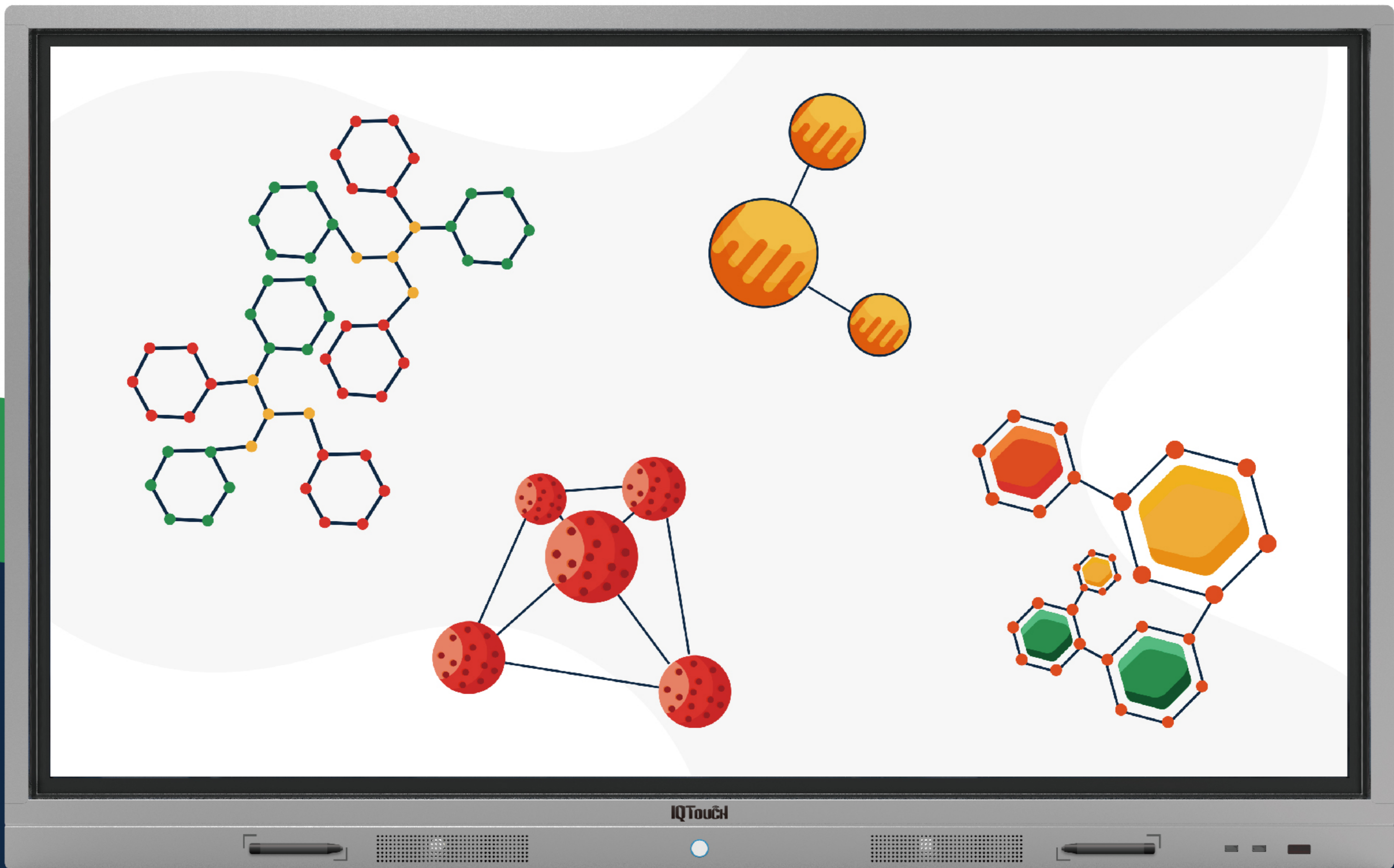


IQTouch L PRO SERIES



IQTouch L Pro features 20 point touch and Android 6.0 system.

It is very easy for annotation and 4K UHD crystal clear presentation. With multi-screen casting projection, it can create a collaborative and interactive atmosphere in the classroom or workplaces, where partners could work together by casting their devices wirelessly.



20-point touch



4K UHD image display



Built-in WIFI hot spot



Built-in Android system to download all your favorite Apps from Google Play Store



Energy-saving mode to save energy



Built-in screen recording function



Child lock can lock screen and power button



Annotation capability for all input sources and built-in whiteboard software with QR code scan to share

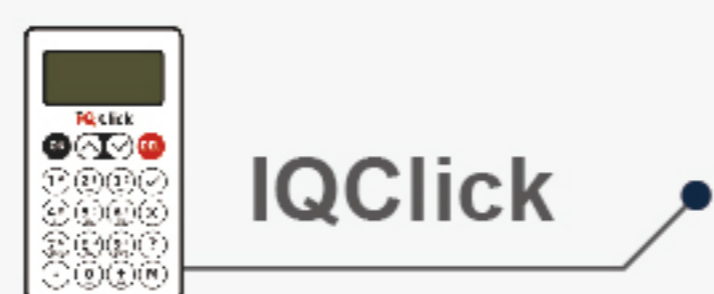
Specification

| | | | | |
|-----------------------------------|---|-----------------------------|----------------------|----------------------|
| Model | LE055MD | LE065MD | LE075MD | LE086MD |
| Diagonal Size | 55inch | 65inch | 75inch | 86inch |
| LED Light Source | Backlight | Backlight | Backlight | Backlight |
| Aspect Ratio | 16:9 | 16:9 | 16:9 | 16:9 |
| Resolution | 3840*2160 | 3840*2160 | 3840*2160 | 3840*2160 |
| Brightness (typ)/(min) | 400cd/m ² | 400cd/m ² | 400cd/m ² | 400cd/m ² |
| Contrast Ratio (typ)/(min) | 5000:1 | 5000:1 | 5000:1 | 5000:1 |
| Response Speed (typ)/(min) | 5ms | 5ms | 5ms | 5ms |
| Depth of Color | 8bit | 8bit | 8bit | 8bit |
| Viewing Angel | 178° | 178° | 178° | 178° |
| Video Standard | PAL/SECAM/NTSC;BG /DK /I/L | | | |
| Built-in Speaker | 2*15W | 2*15W | 2*15W | 2*15W |
| Front Ports | USB2.0*2 | | | |
| Input Ports | HDMI*2,VGA*1, USB*2,YPBPR*1, AV*1, AUDIO*1,LAN*1,RS232*1,TF*1 | | | |
| Output Ports | SPDIF*1, EARPHONE*1, AV*1,Touch-USB*1 | | | |
| Android | CPU | Cortex A53/1.5GHz/Quad-core | | |
| | RAM&ROM | 2GB DDR3/32GB | | |
| | Version | Android 6.0 | | |
| OPS (Optional) | I3/I5/I7, 4G/8G, 500G/1T | | | |
| Interactivity | Resolution | 32768*32768 | | |
| | Touch Points | 20 | | |
| | Scanning Speed | 95~105fps | | |
| Power Supply | 100~240V, 50-60 Hz | | | |
| Power Consumption | ≤ 138W | ≤ 168W | ≤ 300W | ≤ 291W |
| Stand-by Power Consumption | < 0.8W | ≤ 0.5W | ≤ 0.5W | ≤ 0.5W |
| Working Temperature | 0°C~ 40°C | | | |
| Net Weight | 29Kg±1Kg | 45Kg±1Kg | 59.4Kg±1Kg | 80.3Kg±1Kg |
| Gross Weight | 34Kg±1Kg | 59.2Kg±1Kg | 75.4Kg±1Kg | 99.54Kg±1Kg |
| Product Size (W*D*H) (mm) | 1263.3*95.55*771.3 | 1514.3*102.1*945.1 | 1735.8*107*1069.25 | 1989*114*1205.95 |
| Packing Size (W*D*H) (mm) | 1385*185*905 | 1640*215*1055 | 1858*220*1195 | 2112*240*1326 |
| Optional Accessories | Wireless Keyboard and Mouse, Mobile Stand, Telescopic Pointer | | | |

*Specifications are subject to change without notice. *All dimensions±1cm.

For better interaction, we suggest you using IQTouch together with:

HARDWARE



SOFTWARE



IQClass Software



IQClass Plus Software



IQSchool Solution

www.IQBoard.net

IQ Authorized Dealer



FUTURE CLASS, IQ CLASS

Returnstar Interactive Technology Group CO., LTD.
 6th Bldg. High-Tech Base. Fuzhou Fujian Prov. China
 0086-591-38202660
 0086-591-38203003
www.IQBoard.net
 IQBoard@IQBoard.net



STOCK CODE
836453